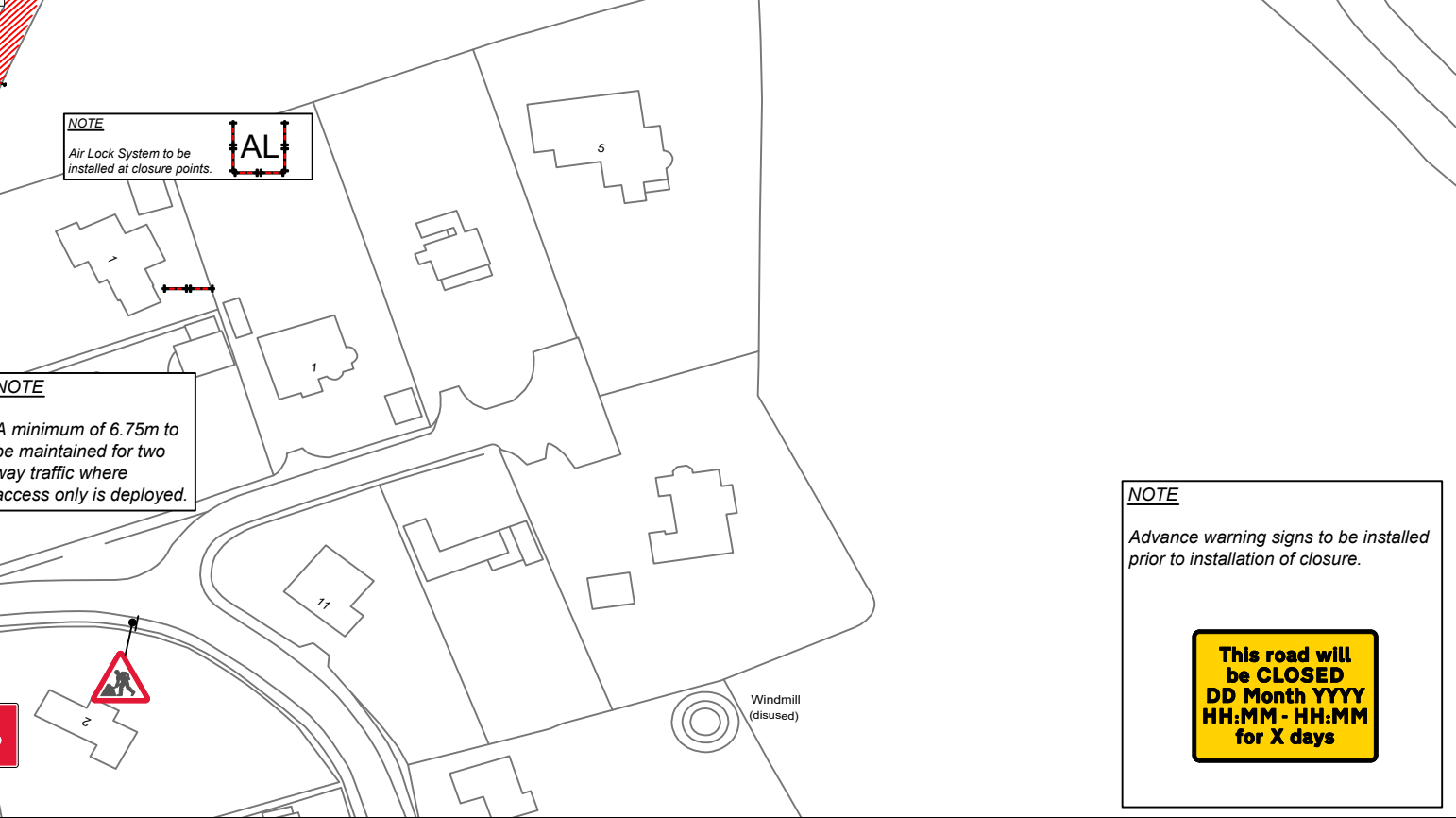
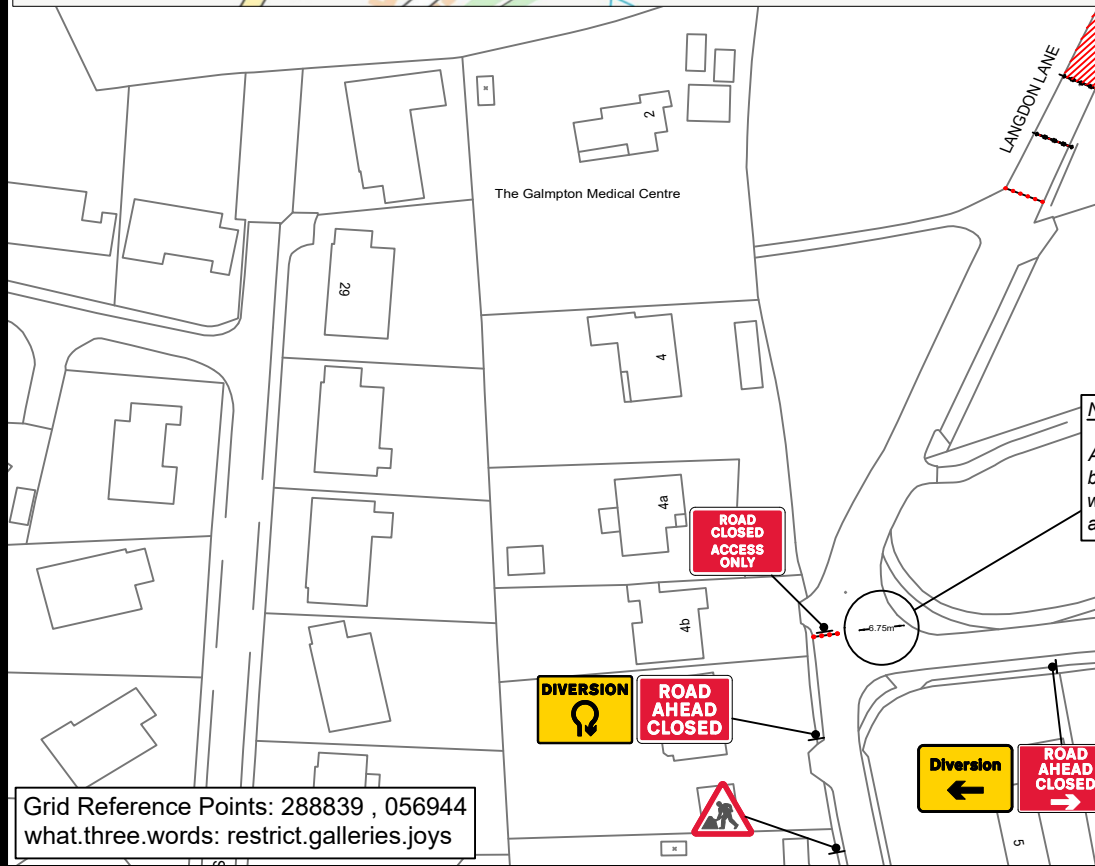
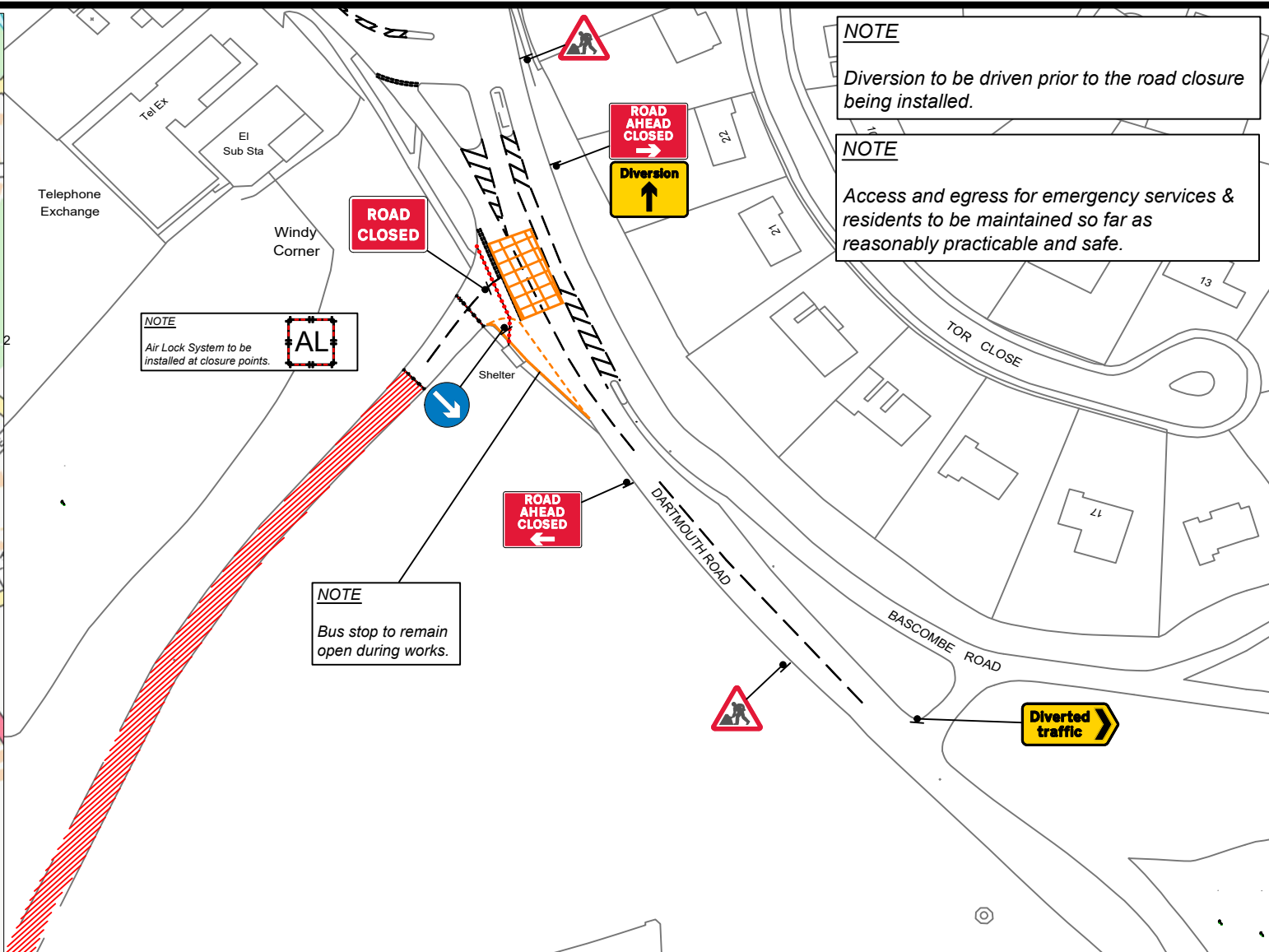
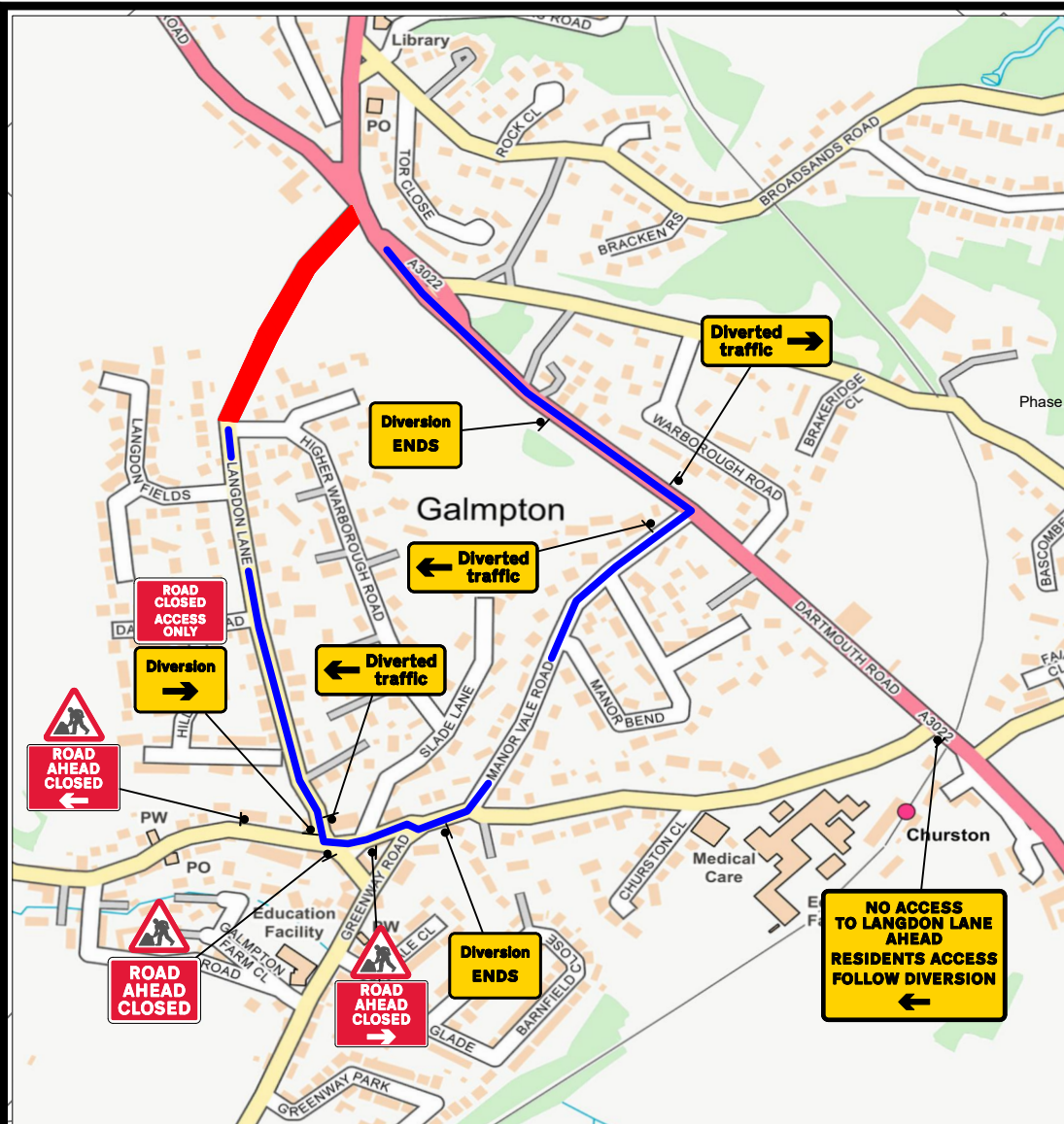


BILL OF QUANTITIES

Qty: 1 Ref: 13-9 Schedule 13: Temporary Sign	
Qty: 1 Ref: 13-9 Schedule 13: Temporary Sign	
Qty: 2 Ref: 13-9-RCAD Road Closed Access Only	
Qty: 1 Ref: 13.9 Schedule 13-9: Temporary Information	
Qty: 3 Ref: 13.9 Schedule 13-9: Temporary Information	
Qty: 1 Ref: 13.9 Schedule 13-9: Temporary Information	
Qty: 1 Ref: 13.9 Schedule 13-9: Temporary Information	
Qty: 1 Ref: 2702 Start of temporary diversion route	
Qty: 2 Ref: 2702 End of temporary diversion route	
Qty: 1 Ref: 2702 Start of temporary diversion route	
Qty: 1 Ref: 2702 Start of temporary diversion route	
Qty: 2 Ref: 2703 Direction of temporary diversion route from junction ahead	
Qty: 1 Ref: 2703 Direction of temporary diversion route from junction ahead	
Qty: 1 Ref: 2704 Direction of temporary diversion route	
Qty: 1 Ref: 610 Keep right	
Qty: 7 Ref: 7001 Road works ahead	
Qty: 1 Ref: 7010-FP-13-9 Nature of temporary hazard ahead - Road Closed	
Qty: 2 Ref: 7010-FP-13-9 Nature of temporary hazard ahead - Road Ahead Closed	



NOTE
Advance warning signs to be installed prior to installation of closure.

This road will be CLOSED DD Month YYYY HH:MM - HH:MM for X days

Grid Reference Points: 288839 , 056944
what.three.words: restrict.galleries.joys



Date:	Rev:	DRAWN:	APPROVED:	Drawing Number:	GLH-1204-REV3
22.07.24	3	JA	GLH	Client Reference:	Windy Corner
Title:		Traffic Management:		Road Closure & Diversion	
Langdon Lane, Broadsands, Torbay, TQ5 0FG		Road Speed:		30mph	

	Closed Area		Sign
	Cone		Diversion route
	Pedestrian Barrier		

All drawings are drawn to north.

All layouts are drawn with Traffic Signs Regulation & General Layout Directions 2016 & Chapter 8 Guidelines. Using Safety At Street Works And Road Works A Code Of Practice as a guideline.
Drawing to be read with relevant method statement & risk assessment.
All sign locations are indicative and exact locations will be determined on site.
Drawn by Ackroyd Design.